

# ASPHALT ROAD CORE DRILL ALL-ELECTRIC

ALWAYS  
2 STEPS  
AHEAD!



## Road Core Drill All-Electric

The CO2 neutral road core drill device is the sustainable answer to climate change. It produces no emissions and saves resources as well as costs by being independent of fossil fuels.

### Technical data

Dimensions	1700 x 1800 x 3000 mm
Weight	750 kg
Electrical Data	3,7 kW
Rotational speed	180-1370 1/min
Accumulator operation	up to 6 hours
Water Tank	230 Litres (with pump)
Drilling diameter	up to 350 mm
Drilling depth	up to 700 mm
Feed rate infinitely variable	
Producer	infraTest Prüftechnik (DE)

60-01000

**NEW  
ELECTRIC  
SUSTAINABLE**

### Advantages:

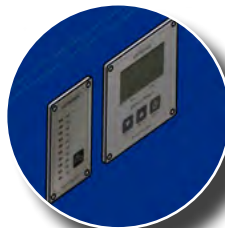
- ▶ Environmentally friendly
- ▶ Simple charging
- ▶ Very lightweight, eliminating the need for a trailer licence
- ▶ A complete working day without recharging
- ▶ Built-in remote control for maximum working safety



LED worklights



LED warning light



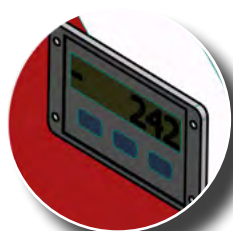
Display of the filling and charging level



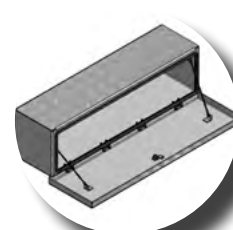
Power Plug



Remote Control



Digital display of  
drilling depth



Aluminium tool box



6 hours with two  
accumulator